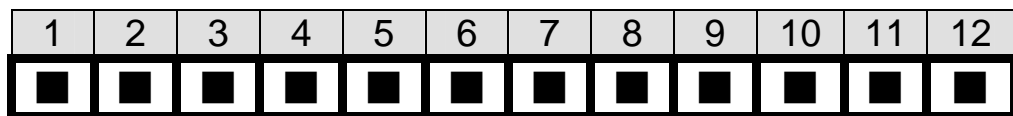


PCI-5S2-RS-R40

5-Slot Backplane with 4 PCI and 1 ISA Bus User Manual Ver. 4.0

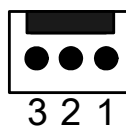
1. PW1: AT Power Connector

Pin	Description	Pin	Description
1	PWRGD	7	GND
2	+5V	8	GND
3	+12V	9	-5V
4	-12V	10	+5V
5	GND	11	+5V
6	GND	12	+5V



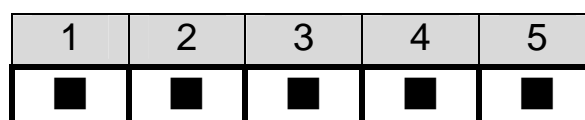
2. CN3, CN5: Fan Connector

Pin	Description
1	NC
2	+12V
3	GND



3. CN1: Voltage Connector

Pin	Description
1	+5V
2	-5V
3	-12V
4	+12V
5	GND

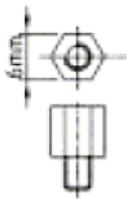


4. PCI routing table:

PCI SLOT	PCI1	PCI2	PCI3	PCI4
IDSEL	AD31	AD30	AD29	AD28
REQ#	REQ0#	REQ1#	REQ2#	REQ3#
GNT#	GNT0#	GNT1#	GNT2#	GNT3#
INTA	B	C	D	A
INTB	C	D	A	B
INTC	D	A	B	C
INTD	A	B	C	D

5. Notice:

- a. Recommend to use 6mm width spacer to install



- b. Torsion must less than 6lb-inch

6. Dimension:

