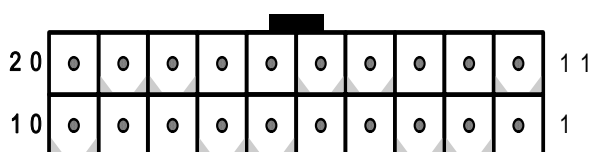


# PCI-13SD-RS-R40

## 13-Slot Backplane with 3+4 PCI and 3+3 ISA Bus User Manual Ver. 4.0

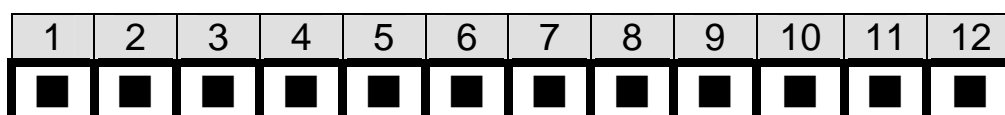
### 1. PW2: ATX Power Connector

Pin	Description	Pin	Description
1	+3.3Vdc	11	+3.3Vdc
2	+3.3Vdc	12	-12Vdc
3	GND	13	GND
4	+5Vdc	14	PS-ON
5	GND	15	GND
6	+5Vdc	16	GND
7	GND	17	GND
8	PWR-OK	18	-5Vdc
9	+5VSB	19	+5Vdc
10	+12Vdc	20	+5Vdc



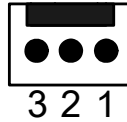
### 2. PW1: AT Power Connector

Pin	Description	Pin	Description
1	PWRGD	7	GND
2	+5V	8	GND
3	+12V	9	-5V
4	-12V	10	+5V
5	GND	11	+5V
6	GND	12	+5V



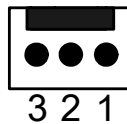
### 3. CN2: Backplane to Mainboard ATX power control connector

Pin	Description
1	GND
2	PSON#
3	5VSB



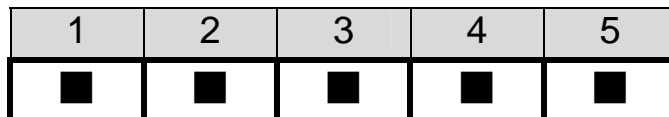
### 4. CN3, CN5: Fan Connector

Pin	Description
1	GND
2	+12V
3	NC



### 5. CN1: Voltage Connector

Pin	Description
1	+5V
2	-5V
3	-12V
4	+12V
5	GND



**6. PCI routing table:  
System 1.**

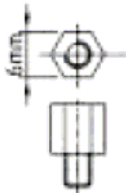
PCI Routing					
Signal	REQ#	GNT#	CLOCK	IDSEL	INT
PCI 1	REQ0#	GNT0#	CLK0	AD31	B, C, D, A
PCI 2	REQ1#	GNT1#	CLK1	AD30	C, D, A, B
PCI 3	REQ2#	GNT2#	CLK2	AD29	D, A, B, C

**System 2.**

PCI Routing					
Signal	REQ#	GNT#	CLOCK	IDSEL	INT
PCI 9	REQ0B#	GNT0B#	CLK0B	AD31	B, C, D, A
PCI 10	REQ1B#	GNT1B#	CLK1B	AD30	C, D, A, B
PCI 11	REQ2B#	GNT2B#	CLK2B	AD28	A, B, C, D
PCI 12	REQ3B#	GNT3B#	CLK3B	AD29	D, A, B, C

**7. Notice:**

- a. Recommend to use 6mm width spacer to install



- b. Torsion must less than 6lb-inch

### 8. Dimension:

