



 **Raritan.**

Product Brochure 2015

**Your Team**  
**Raritan History**  
**Power Management**  
*PX Intelligent PDUs*..... 8  
*PX-3000 Inline Meters*..... 9  
*Branch Circuit Monitoring*..... 10  
*Transfer Switches*..... 11  
*Industry Leading Innovation*..... 12  
*Customer Experience: eBay*..... 14

**Environmental Management**  
*EMX Smart Rack Controllers*..... 18  
*Environmental Sensors*..... 19

**Data Center Infrastructure Management**  
*Power IQ Monitoring Software*..... 22  
*dcTrack Operations Software*..... 23  
*Customer Experience: British Airways*..... 24

**Access & Control Management**  
*Dominion KX III*..... 28  
*Dominion KX II-101 V2*..... 29  
*Dominion LX*..... 30  
*Dominion KSX II*..... 31  
*Dominion SX*..... 32  
*CommandCenter Secure Gateway*..... 33  
*Paragon II*..... 34  
*MasterConsole CAT*..... 35  
*LED-Backlit LCD Console Drawer*..... 36  
*Simply the best in KVM-over-IP*..... 37  
*Customer Experience: DER SPIEGEL*..... 38

3  
4  
6  
  
16  
20  
  
26



**Ching-I Hsu, Ph.D.**  
 Chairman and Chief Executive Officer

Ching-I Hsu founded Raritan in 1985 and led the company from startup to global data center solutions powerhouse over the course of three short decades. Raritan today is the industry leader in data center infrastructure management (DCIM), intelligent power management, and remote KVM management.



**Herman Chan**  
 VP, Global Marketing & General Manager DCIM

Herman Chan has pioneered Raritan's successful entry into the intelligent power management segment. Herman manages Raritan's emerging data center infrastructure management (DCIM) business and oversees Raritan's global marketing strategy and programs.



**Rasul Damji**  
 VP, Global Sales & Product Operations

Rasul has been an integral part of establishing DCIM and power management solutions while maintaining a competitive KVM business. Rasul is responsible for worldwide operations. He is also involved in the development of strategic reseller and supplier relationships.



**Richard May**  
 United Kingdom, Ireland & Scandinavia



**Rob SuijkerBuijk**  
 Eastern Europe, Middle East, Turkey, Russia & Africa



**Ralf Ploenes**  
 Germany, Austria & Switzerland



**Ron Kuperus**  
 Netherlands, Belgium & Luxembourg



**François Rose**  
 France & Southern Europe

Our Technology Inspires the Intelligent Use of Resources.

# Raritan History

Raritan is a proven innovator of power management solutions, DCIM software, and KVM-over-IP for data centers of all sizes. In over 76 countries and 50,000 locations worldwide, Raritan's award-winning hardware and software solutions increase energy efficiency, improve reliability, and raise productivity.

Industry First Coaxial KV Switch

First Coaxial KVM Switch

On-Screen Interfaces

KVM over Fiber Optic Cable

KVM over Web Browser

Enterprise Device Management (CC-SG)

First 32 and 64 port digital KVM switches

Data Center Infrastructure Management (dcTrack)

Environmental Controller & Sensors

First Enterprise-scale KVM

Embedded KVM over IP

Intelligent Power Strips

Branch Circuit Monitoring

IT Service Management

1985

1995

2000

2005

2010

2015

PC Design, Assembly & Distribution

"Keep Alive" Keyboard Emulation

Multi-User KVM Switch

First KVM over Cat5 Switch

KVM over IP

Remote Serial Console

Switchless KVM Switching

KVM & Serial over IP

Power Control

Palm-size KVM-over-IP Extender

Integrated & Proactive Systems

Network & Security Mgmt Industry first KVM on a chip

Energy Mgmt Software

Management of Virtual and Physical IT with CC-SG

Dominion KX III

Hybrid Transfer Switch



# Power Management



## PX Intelligent PDUs

Our intelligent rack power distribution units (iPDUs) include outlet switched, outlet metered, PDU metered, and more. Available in single and three phase models.



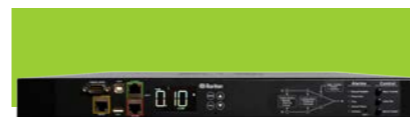
## PX-3000 Inline Meters

Intelligent inline power meters that easily add power, energy and rack environment data collection capabilities to stand-alone IT equipment.



## Branch Circuit Meters

The BCM series of intelligent branch circuit meters provide power and energy data on branch circuits and mains in an electrical service entrance or a remote power panel.



## Transfer Switches

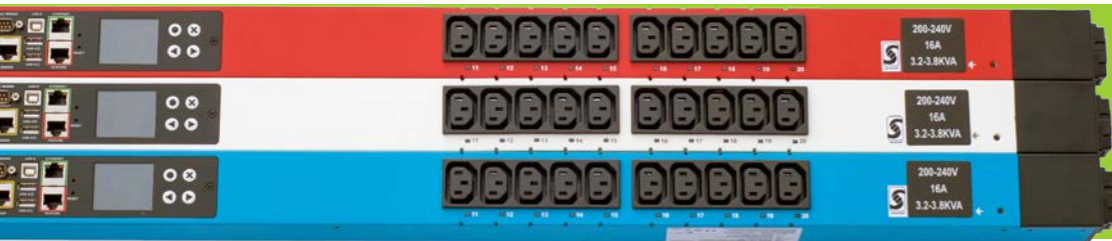
The hybrid rack transfer switches use electromechanical relays and silicon-controlled rectifiers (SCRs) to transfer a load between two sources.



## “Raritan Understands Power”

Ralf Ploenes  
Country Manager D-A-CH

## PX® Intelligent PDUs



The Raritan PX family of high-quality, intelligent rack power distribution units (iPDUs) offers real-time remote power monitoring of current (amps), voltage, power (kVA, kW) and energy consumption (kWh) with +/- 1% billing-grade accuracy, even at individual outlets.

The PX series offers hundreds of models to meet all your data center applications, including models with remote outlet switching, individual outlet metering, high-power for blade servers and high-density applications, and 400V power distribution.

### Features

- Energy Efficient Latching Relays
- Choice of iPDU Colors
- Industry's Most Flexible USB Port
- kWh Metering Accuracy
- Optional sensor ports
- Replaceable Controller
- Compact iPDU Design
- Secure and Encrypted

	Switching	Outlet Metering	Inlet Metering	Circuit Breaker Metering
PX-1000			■	■
PX-2000	■		■	■
PX-4000		■	■	■
PX-5000	■	■	■	■

## PX-3000 Inline Meters

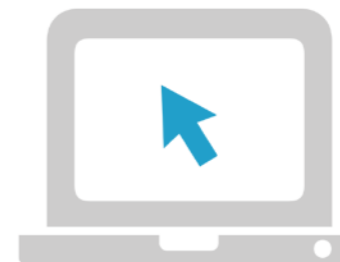


The PX-3000 Series Inline Power Meters simplify management of power usage and environmental conditions in the data center while allowing you to monitor the power on dedicated circuits.

There is no need to remove or re-cable IT equipment. Just wire the inline meter into existing circuits and get real-time remote power monitoring, including current (amps), voltage, power (kVA, kW) and energy consumption (kWh) to +/- 1% accuracy. Plus they're sensor ready to support rack temperature and humidity monitoring.

### Features

- Broad Array of Configuration Choices
- Web-based Remote Power Monitoring
- Accurate Rack Metering
- Receive Advanced Alerts
- Secure and Encrypted
- Powerful Smart Controller



Find the PDU that's right for you.

Visit our interactive PDU selector  
[www.FindMyPDU.com](http://www.FindMyPDU.com)

## Branch Circuit Monitoring



Raritan's branch circuit meter (BCM) provides real-time views of electrical capacity and power usage on branch circuits, and mains, in an electrical service entrance or a remote power panel. Anytime a circuit's current approaches a breaker's limit, the BCM sends an alert that helps prevent potential problems.

Raritan's BCM provides billing grade metering accuracy enabling charging customers for true energy costs while maintaining uptime through monitoring and alerting.

### Features

- Easy Installation
- Accurate Metering
- Integrates with DCIM
- Remote Power Monitoring
- Rich Power Data
- Built-in USB Port



Models and Description	
BCM-2401-KIT-01	Branch circuit monitor with monitoring for 3 mains lines and 21 branch circuits. Includes 3x 250A mains split-core CTs and 21x 60A branch circuit split-core CTs.
BCM-2401-KIT-02	Branch circuit monitor with monitoring for 3 mains lines and 21 branch circuits. Includes 3x 250A mains split-core CTs and 21x 100A branch circuit split-core CTs.
BCM-2401	Branch circuit monitor with monitoring for 3 mains lines and 21 branch circuits.
BCM-250A-MCT-3PK	Includes 3x 250A mains split-core CTs.
BCM-60A-BCT-21PK	Includes 21x 60A branch split-core CTs.

## Transfer Switches



Raritan's hybrid transfer switch cleverly uses both electromechanical relays and silicon-controlled rectifiers (SCRs) to maximize the positive and minimize the negative characteristics of traditional transfer switches. Automatic transfer switches (ATS) suffer from longer transfer times of 8 to 16ms, and often fail as a result of electrical arcing that welds contacts together. Static transfer switches (STS) offer very fast transfers of 4 to 6ms, but are over five and half times more expensive than ATS, draw far more energy, and produce excess heat.

Raritan's innovative hybrid rack transfer system provides industry leading performance and maximum reliability.

### Features

- Fast Transfer Times (4 - 8ms)
- Reliable Transfer
- Over-sized relays and SCRs
- Eliminates electrical arcing
- Inlet surge protection
- Field replaceable, fast blow fuses (short circuit protection)

	Chassis	Input Voltage	Plug Type	Output Voltage	Outlet Type	Current	Circuit Breaker
PX3TS-1875CR	1U	200-240	(2) IEC C-20 (CE)	200-240	8x C13 1x C19	16	0
PX3TS-1875R	1U	200-240	(2) IEC 60309 16A	200-240	8x C13 1x C19	16	0
PX3TS-1469R	2U	200-240	(2) IEC 60309 16A	200-240	16x C13 4x C19	32	2x 16A 1-Pole

# Industry Leading Innovation



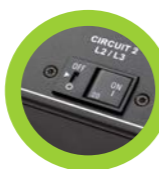
**Energy Efficient Latching Relays**  
Latching bistable relays only require power to switch from one state to another so PDUs consume 67% less energy, produce less heat, and can be configured to return to pre-outage state instantly, or leverage patent-pending outlet sequencing technology that minimizes inrush current.



**User Configurable Power on Sequencing**  
Sophisticated outlet sequencing can power on equipment with single outlet or outlet groups in a set order to minimize circuit breaker trips from inrush currents. Organizations can maximize uptime when powering on circuits and racks full of equipment.



**Full Color Chassis**  
Raritan's intelligent PDUs are available in ten colors that help reduce errors, and make it easier to identify power feeds, and troubleshoot, thereby lowering the risk and duration of unplanned downtime.



**Low Profile Flush Mount Circuit Breakers**  
Eliminate the need to stock fuses, have electricians change fuses, and the possibility of installing an incorrect fuse. Alerts are sent when thresholds are crossed which could result in circuit breakers tripping. Improve rack accessibility by eliminating circuit breaker dog houses.



**kWh Metering Accuracy**  
Accurate kWh metering allows you to measure actual energy usage for accurate customer or department charge-back billing. The data can be used to encourage energy efficient behavior among users, establish power consumption baselines, and analyze the effect of efficiency initiatives.



**Residual Current Monitoring Option**  
Reduces the risk of electric shock by measuring current flowing in the ground wire. These residual currents will generate a system alert and keep technicians working on racks safe from harm.

Soaring energy prices, greater competition in the marketplace, and global concerns over climate change are forcing companies to reconsider how they utilize power in the most valuable and energy intensive resource they own – the data center. It's why data centers are now so focused on cutting operational costs by improving efficiencies, and making optimal use of energy, space, and cooling.

Not surprisingly, many of the major strategies being employed to address these challenges depend on capabilities that were not present in the simple commodity power strips of a few years ago.



## SecureLock™ Power Cords

IEC outlets often fail to hold plugs as securely as data center managers would like. Raritan's intelligent rack PDUs are equipped with SecureLock outlets that work with standard power cords, or lock when using SecureLock power cords to prevent cables from coming unplugged due to vibration or human error. Available in three colors - black, blue, and red - that help you to easily identify power feeds.





## Real-Time Energy Optimization and Best Practices in a Mission-Critical Data Center

eBay is a company that cares about improving reliability given that downtime costs \$2,000/second or \$120,000/minute. The large scale of eBay's operations means they also need to keep equipment and electricity costs in check. To those ends, eBay has developed a model for its data centers that makes their IT operations both highly reliable and 50% less expensive to operate than the data centers they are decommissioning.

In addition to minimizing faults and lowering operating costs, eBay's South Jordan, Utah facility has achieved the U.S. Green Building Council's Leadership in Energy & Environmental Design (LEED) Gold ranking.

Just as important as the LEED Gold efficiency ranking and the Tier IV reliability is the flexibility designed into the eBay data center. It is a data center that can adapt as requirements and equipment changes and, particularly important for eBay, as demand requires accommodation for future growth.

**“PX Intelligent PDUs can provide me with the precision required to calculate my true operational costs for every server, down to the last penny”**

Read full case-study on Raritan.eu



### Customer

Founded in 1995, eBay connects a diverse and passionate community of individual buyers and sellers, as well as small businesses. With more than 90 million active users globally, eBay is the world's largest online marketplace, where practically anyone can buy and sell practically anything.

### Challenges

With compute loads – and operating costs – on the rise, eBay created and began executing a four-year data center plan with an ambitious goal:

- To cut power costs in half
- To double compute performance
- To gain greater operational agility and increased reliability

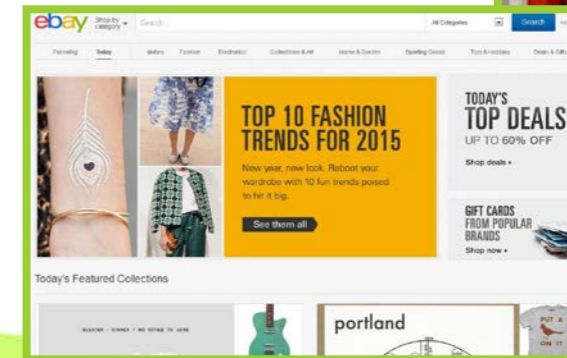
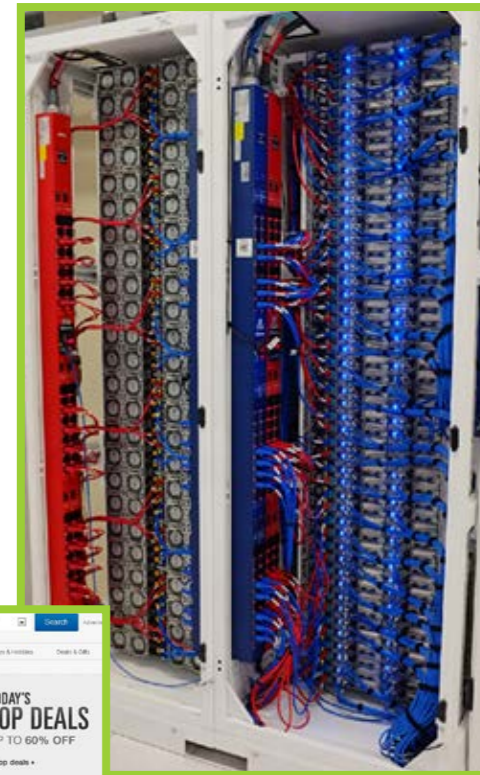
### Solutions

Power Management  
PX® intelligent PDUs

### Results

eBay developed a model for its data centers that makes their IT operations both highly reliable and 50% less expensive to operate than the data centers they are decommissioning.

In addition to minimizing faults and lowering operating costs, eBay's South Jordan, Utah facility has achieved the U.S. Green Building Council's Leadership in Energy & Environmental Design (LEED) Gold ranking. Just as important as the LEED Gold efficiency ranking and Tier IV reliability is the flexibility designed into the eBay data center.





# Environmental Management



## EMX Smart Rack Controllers

The EMX smart rack controller is a central access point for all of Raritan's environmental sensors such as temperature and humidity, and in conjunction with Raritan's data center infrastructure management solution (DCIM) provides sensor readings and asset management.



## Environmental Sensors

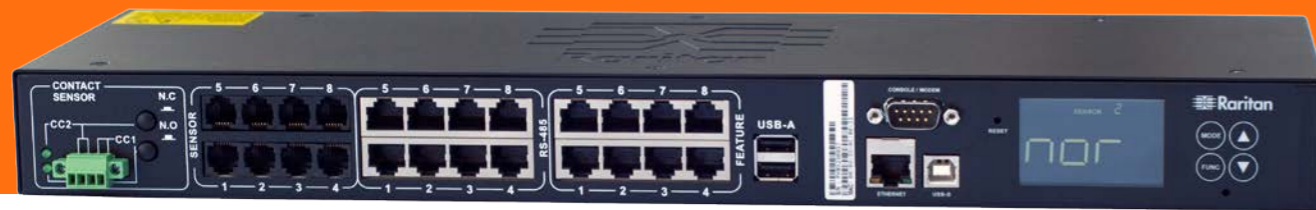
Environment sensors such as temperature, humidity, airflow, air pressure, water, and contact closure help data center managers identify hot spots, efficiently and optimally cool equipment, prevent costly downtime, and maintain data center security.



**“Our Technology Inspires the Intelligent Use of Resources”**

Ching-I Hsu, Ph.D.  
Chairman and CEO

# EMX - Smart Rack Controller



The Raritan EMX is a central connection point for all of Raritan's environmental sensors. The EMX smart rack controller offers up to eight sensor ports, eight feature ports for Raritan's dynamic asset-tracking solution and eight RS-485 ports, all in a 1U form factor.

This innovative rack monitoring solution helps data center and facilities managers to ensure uptime by monitoring racks for possible hot spots, save on cooling costs by confidently raising data center temperatures and make strategic decisions on environmental design and modifications.

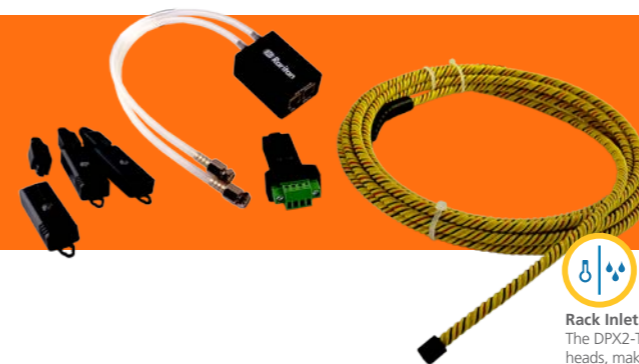
## Features

- USB Webcam Support
- Supports up to 128 sensors
- Wired or WiFi Network Ready
- Web Browser Accessible
- Receive Advanced Alerts

## Models and Description

Model	Description
EMX2-111	Smart rack controller with 1 RJ-12 sensor port, 1 RJ-45 feature port for AMS, 1 RJ-45 RS-485 port, 1 USB-A port, 1 USB-B port, 1 RJ-45 Ethernet port, 1 DB-9M console/modem, LCD display
EMX2-888	Smart rack controller with 8 RJ-12 sensor ports, 8 RJ-45 feature ports for AMS, 8 RJ-45 RS-485 ports, 2 USB-A ports, 1 USB-B port, 1 RJ-45 Ethernet port, 1 DB-9M console/modem, 2 contact closure, LCD display

# Environmental Sensors



Raritan environmental solutions feature sensors for monitoring temperature, humidity, airflow, air pressure, water/leaks, contact closures, digital proximity, and acceleration.

The sensors are deployed as plug-and-play options for the PX intelligent rack PDU series, EMX rack controllers, PX inline meters, rack transfer switches, and branch circuit monitors.

Environment sensors make it easy to identify hot spots, cool equipment optimally, prevent downtime, and maintain facility security.



**Acceleration**  
The DX-VBR detects vibrations, such as from earthquakes or damaged fans, along three axes (x, y, z).



**Hot Aisle Temperature**  
The DPX-T1 can be placed at either the front or rear of the rack to monitor cool air entering and hot air being expelled, and ensure proper containment.



**Airflow**  
The DPX-AF1 can meter airflow in plenum space such as under a raised floor, or just above the perforated tiles.



**Rack Inlet Temperature and Humidity**  
The DPX2-T3H1 strings together 3 sensors heads, making it easy to mount them at the bottom, middle, and top of the cool air inlet side as per ASHRAE<sup>1</sup> guidelines.



**Digital Proximity**  
The DX-PIR detects motion around a cabinet.



**Differential Air Pressure**  
The DPX-T1DP1 meters differential air pressure above and below a raised floor, or between hot aisles and cold aisles to prevent thermal leaks.



**Contact Closure**  
The DPX-CC2-TR dual contact closure is used with 3rd party sensors such as smoke detectors, magnetic door locks, or to trigger webcams whenever a cabinet door is opened. DX-PD2C5 is a dry contact closure with 12V power to support door locks.



**Water/Leak**  
The DPX-WSC-35-KIT sensor monitors leaks on the floor, around an area, on liquid cooled racks, and can detect condensation.



**Mini Temperature**  
The DPX-T1-MINI is a single temperature sensor designed to plug directly into a PX intelligent rack PDU's USB port.



# Data Center Infrastructure Management



## Power IQ®

Power IQ enables data center and facility managers to closely monitor and efficiently utilize their existing data center power infrastructure. Data center health maps, power analytics, cooling charts, and reports provide the tools to alert you to potential trouble and understand real-time power load, trends, and capacity at all levels of infrastructure. A configurable dashboard provides vendor agnostic views of power capacity, environmental health, and energy consumption.



## dcTrack®

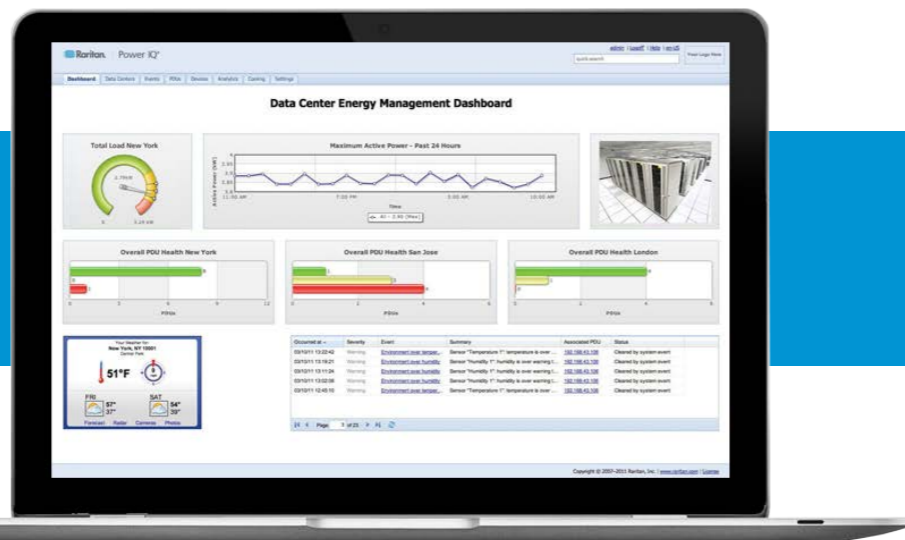
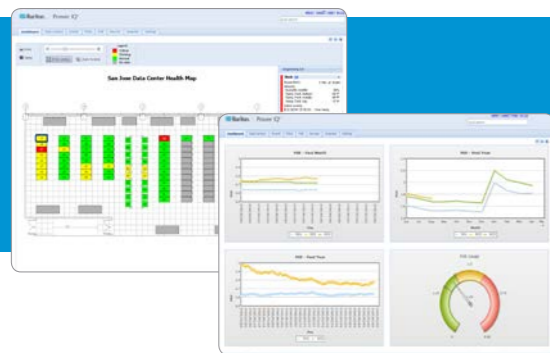
An award-winning, easy-to-use data center infrastructure management (DCIM) solution that provides real-time information about your power, networks and IT equipment. It offers a visual mapping of your infrastructure and helps you to manage the physical provisioning of IT equipment, improve capacity planning, and keep track of data center space, power, data connectivity, and their relationships to IT equipment, applications, and services.



**“We Know Data Centers”**

Herman Chan  
VP, Global Marketing  
& General Manager DCIM

# Power IQ®



Power IQ® enables data center and facility managers to closely monitor and efficiently utilize their existing data center power infrastructure. Data center health maps, power analytics, cooling charts, and reports provide the tools to alert you to potential trouble and understand real-time power load, trends, and capacity at all levels of infrastructure.

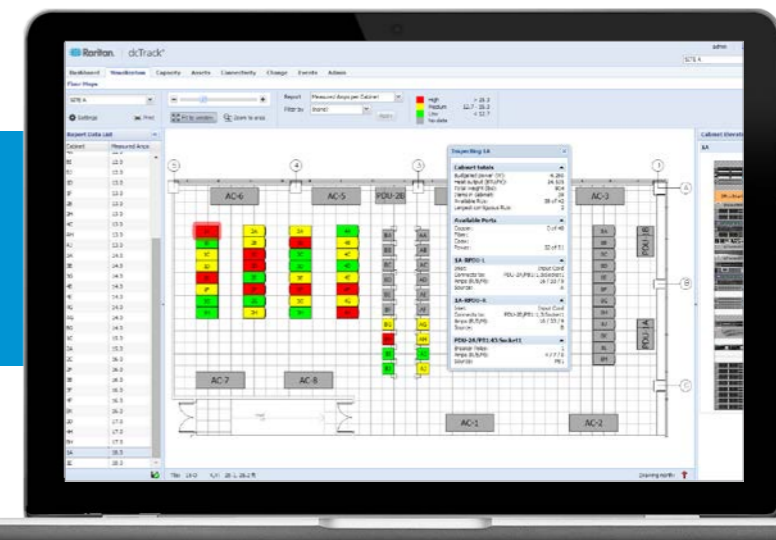
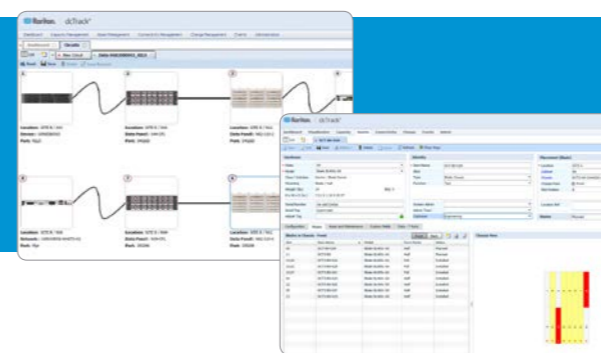
“By graphing energy usage and trends and tracking our carbon footprint, Raritan’s Energy Management solution is helping us identify areas where we can conserve. Allowing us to monitor in real-time and reduce cost.”

— Will Stevens  
Senior IT Director  
AOL

## Features

- Energy Management
- Environment Management
- Vendor Agnostic Management
- Power Management
- PUE Gauge and Chart

# dcTrack®



Raritan’s DCIM Operations software, dcTrack® is an award-winning, easy-to-use data center infrastructure management (DCIM) solution that provides real-time information about your power, networks and IT equipment. It offers a visual mapping of your infrastructure and helps you to manage the physical provisioning of IT equipment, improve capacity planning, and keep track of data center space, power, data connectivity, and their relationships to IT equipment, applications, and services. When integrated with a CMDB or change management system for workflow functionality, dcTrack provides a fast ROI, especially during any data center relocation, consolidation, or new build project.

## Features

- Asset Management
- Capacity Management
- Change Management
- Power and Energy Management

“dcTrack has given us a 50% gain in efficiency in terms of locating an asset’s physical location within the data center”

— Joseph Keena  
Manager Data Center Operations  
Shands Healthcare



## Raritan's Data Center Infrastructure Management (DCIM) solution manages British Airways' 6 Data Centers

British Airways (BA) is a full service global airline, with an extensive route network flying from its Heathrow and Gatwick hubs as well as to and from many regional and international airports. Since merging with Iberia to form the IAG group, British Airways has become the world's third largest airline.

After consulting with BA on their needs and considering several options, including upgrading their existing DCIM software, it was decided to implement a new DCIM solution; Raritan's dcTrack. This met the airline's criteria at a fraction of the cost of upgrading the incumbent software. Raritan was able to save time and cut costs by updating and then transferring data from BA's existing DCIM software and importing it into dcTrack. This, in turn, minimized the requirement for physical auditing of the data halls. BA has a very large IT infrastructure with over 500 data cabinets spread across 6 halls in two different sites near its Heathrow Waterside HQ.

dcTrack provided an easy to use solution that displays real-time information, as well as asset and capacity reporting. Raritan incorporated several enhancement requests for British Airways, which were subsequently released into the general release of dcTrack.

**"The new DCIM software allows us to quickly allocate space for new servers, manage power and network connectivity"**

Read full case-study on [Raritan.eu](http://Raritan.eu)

### Customer

British Airways can trace its origins back to the birth of civil aviation. Over the past ninety years since the world's first schedule air service on 25 August 1919, air travel has changed beyond all recognition. Each decade saw new developments and challenges, which shaped the path for the future.

### Challenges

British Airways was looking for a solution to manage server allocation, fibre/cable patching, as well as to plan future power, cooling and capacity needs.

### Solutions

Raritan's dcTrack®, a Data Center Infrastructure Management (DCIM) solution

### Results

British Airways is now using dcTrack across its data center infrastructure to manage server, power and network connectivity changes, provide a work order capability to formally control upgrades and manage capacity planning across their 6 locations. Integration of active power monitoring is on-going.



# Access & Control Management



**Dominion® KX III**  
Enterprise-class, secure KVM-over-IP switch that provides BIOS-level remote management of up to 64 multi-platform servers and serial-based devices in a single switch.



**Dominion® KSX II**  
Solution for branch/remote offices and retail stores and racks with both serial and KVM-managed devices.



**Dominion® SX**  
Serial console server provides admins secure remote access, monitoring, and control all of their serial devices.



**Dominion® KX II-101 V2**  
Palm-sized, single port KVM-over-IP for web-based remote management of a single server or a KVM-over-IP extender for an analog KVM switch.



**Paragon® II**  
Enterprise, Cat5 analog KVM switch for high performance video switching



**CommandCenter® Secure Gateway**  
an easy to deploy, plug-and-play appliance that provides a single pane of glass to all servers, storage, and network equipment.



**Dominion® LX**  
High quality BIOS-level, KVM-over-IP remote management for 1 or 2 users, 8 or 16 ports and up to 256 servers with tiering.



**MasterConsole® CAT**  
Compact, Cat5 KVM switch for one or two users to remotely manage up to 256 servers.



**LED-Backlit LCD Console Drawers**  
Connect to your existing KVM switches and provide video, keyboard, and touchpad functionality for managing multiple servers.

## Dominion® KX III



The Dominion KX III is Raritan's flagship enterprise-class KVM-over-IP switch. With industry leading video performance, security, and enhanced reliability, the Dominion KX III outperforms the competition. With standard features such as DVI / HDMI / DisplayPort digital video, VGA analog video, audio, virtual media, smart card/CAC, and mobile access, the Dominion KX III is suitable for both general computer and dynamic broadcast applications.

It's ideal for **Server Rooms, Test Labs,** and the **Largest Enterprise Data Centers.** KX III offers high performance web-based remote management of servers, storage, and network devices and virtually any application. Deploy individually, or centralize with Raritan's CommandCenter Secure Gateway (see page 33).

### Features

- High Performance Video and Audio
- Remote BIOS-Level Access
- Military Grade Security
- Virtual Media over IP
- Redundancy for Reliability
- Mouse in Sync
- Single Pane of Glass
- Remote Power Reboot

Remote Users over Network	64 Ports	32 Ports	16 Ports	8 Ports
8	DKX3-864	DKX3-832		DKX3-808
4	DKX3-464	DKX3-432	DKX3-416	
2		DKX3-232	DKX3-216	
1		DKX3-132	DKX3-116	DKX3-108

## Dominion® KX II-101 (V2)



The Raritan Dominion KX II-101 is a single port, KVM-over-IP switch that provides the secure BIOS level IP access and control of a full-featured KVM-over-IP switch in an inexpensive, portable, non-blocking, palm-size package.

It's perfect for **branch offices, development and test labs,** and **non-traditional environments** like: Retail/point-of-sale displays, signage and kiosks; or temporary applications for conventions, construction, medical, and military applications.

### Features

- High Performance Video and Audio
- Remote BIOS-Level Access
- Military Grade Security
- Virtual Media over IP
- Redundancy for Reliability
- Mouse in Sync
- Single Pane of Glass
- Remote Power Reboot

Remote Users over Network	1 Port
1	DKX2-101-V2

## Dominion® LX



Dominion® LX is Raritan's affordable KVM-over-IP switch that provides IT managers in small and midsize business (SMB) environments with local and remote BIOS-level server management in 8 port and 16 port switches (expandable to 256 servers with tiering).

It's ideal for **Small to Midsize Businesses** looking for a small footprint and reliability with affordability.

### Features

- Virtual Media over IP
- Remote BIOS-Level Server Mgmt
- Strong Security
- Broad Video Format Support
- True Multi-User Switch
- Web-Based User Interface

### Models and Description

DLX-108	Economical, extensible 8-port KVM-over-IP switch, 1 remote, 1 local user, virtual media, single power and single LAN
DLX-116	Economical, extensible 16-port KVM-over-IP switch, 1 remote, 1 local user, virtual media, single power and single LAN.
DLX-216	Economical, extensible 16-port KVM-over-IP switch, 2 remote, 1 local user, virtual media, single power and single LAN.

## Dominion® KSX II



Raritan's Dominion KSX II is a combined KVM-over-IP and Serial Console Server appliance. It provides secure, remote management to all servers, storage, routers, switches and rack PDU's in remote and branch offices. The KSX II offers award-winning, BIOS-level KVM-over-IP performance, true command-line serial console access and optional remote power control.

It's also perfect for **labs, computer rooms** and **data centers** as a all-in-one remote management appliance for racks with both serial and KVM-managed devices.

### Features

- Virtual Media over-IP
- Serial Console Server
- HD Video Resolution and Digital Audio
- Remote Power Reboot
- Single Pane of Glass
- Government Secure

	KVM-over-IP Ports	Serial Ports	Power Control Ports	Local Port	Built-in Modem	LAN Ports
DKSX2-144	4	4	2	1	Yes	2
DKSX2-188	8	8	2	1	Yes	2



# Dominion® SX



The Raritan Dominion SX serial console servers enable IT and networking professionals to access, monitor and control all of their serial devices securely, anytime, from anywhere. They support a wide range of servers, routers, switches and IT devices and are a cost-effective solution to increase security, reduce network downtime and lower administration costs.

They are ideal for mobile operators, data centers and branch offices that need remote out-of-band administration of Linux & UNIX servers, network equipment, security appliances, rack PDUs and mobile/cellular infrastructure.

## Features

- Supports all IT Equipment
- Remote Out-Of-Band Administration
- Models to Fit all Applications
- Smart Automatic Failover
- Strong Security
- Economical, Full-Featured
- Direct Port Access
- Port and Session Logging

Local Ports	Power Supply	Built-In Modem	Ethernet Ports	Ports					
				4	8	16	32	48	
1	Dual-AC	Yes	1		DSXA-8	DSXA-16	DSXA-32		
		Yes	2			DSXA-16-DLM	DSXA-32-DLM	DSXA-48	
	Single-AC	No	1		DSX-8				
		Yes	1	DSXB-4-M	DSXB-8-M				
2	Dual-AC	No	1				DSXA-32-AC		
		No	2			DSXA-16-DL	DSXA-32-DL	DSXA-48-AC	
	Single-AC	No	1	DSX-4					

# CommandCenter® Secure Gateway



## Centralized Remote Access and Control of IT Infrastructures

Raritan's CommandCenter Secure Gateway (CC-SG) provides IT and lab organizations with secure and consolidated access and power control of all technology platforms at the application, operating system or BIOS level.

CC-SG's single pane of glass helps simplify remote management and expedite troubleshooting of physical and virtual servers, intelligent PDUs, and serial devices.

Available as both hardware and software appliances.

## Features:

- Centralized Authentication, Authorization and Logging
- Centralized Gateway to your IT Infrastructure
- Hardened Security Appliance
- Mobile Access
- Network Neighborhood
- VMware Virtualization
- Universal Virtual Media™



# Paragon® II



Paragon II is an enterprise-class Cat5 analog KVM solution that provides up to 64-users with secure, real-time access and control of thousands of servers and serial devices. Its secure KVM switch technology features the industry's best video quality with resolutions as high as 1920 X 1440 at distances of up to 1,000 feet (300m), making it the perfect solution for **Government, Broadcast, Production and Post-Production facilities**.

Plus, it's ideal for **Enterprise Data Centers** due to its configuration flexibility and broad compatibility, supporting leading platforms from HP, Dell, IBM, Cisco, and Oracle.

## Features

- Scalable, Expandable Architecture
- Multi-User Access
- Simple Administration
- Government Approved Security
- Remote Power Reboot
- Stackable Expansion Unit
- Optional IP Access
- High Performance HD Video

Users	128 Ports		64 Ports		42 Ports	32 Ports
	Main Switch	Stacking Unit	Main Switch	Stacking Unit	-	-
16	P2-UMT1664M	P2-UMT1664S	P2-UMT1664M			
8			P2-UMT832M	P2-UMT832S		P2-UMT832M
4					P2-UMT442	
2					P2-UMT242	

# MasterConsole® CAT



Raritan's MasterConsole® CAT analog Cat5 KVM switch consolidates access and control of multiple PCs & servers to a single workstation. Servers up to 150 feet (30m) away can connect to the MCCAT using Computer Interface Modules (MCIMs) and standard Cat5 cables. These compact KVM switches, available as a single or dual-user switches, feature 8 or 16 ports for servers and can be cascaded to support up to 256 ports.

It's perfect for performing maintenance, administration, running applications, and troubleshooting.

## Features

- Economical, Integrated Cat5-CIM Cables
- KVM "Keep Alive" Technology
- Server and PC Agnostic
- AutoScan / AutoSkip
- High Video Resolution
- Cascading For Expansion

Users	8 Ports		16 Ports	
	Main Switch	Bundles	Main Switch	Bundles
1	MCCAT18	-	MCCAT18	-
2	MCCAT28	MCCAT28-UST: switch with user station	MCCAT216	MCCAT216-UST: switch with user station
		MCCAT28-PAC: switch with 8 MCUTP06-USB cables		MCCAT216-PAC: switch with 8 MCUTP06-USB cables.

# LED-Backlit LCD Console Drawer



IT or lab administrators often need fast and reliable at-the-rack access to their servers for deployment, administration, and maintenance activities.

Raritan's 1U modular LED drawers, with LED-backlit LCD displays provide both energy savings and consolidated access to multiple servers from a single location.

## Features

- High Resolution Video Display
- Energy Efficient LED-backlit LCD Display
- Space Saving Design
- DVI or VGA Video Inputs
- Multi-Platform Support
- Multi-Language Support
- OSD and Font-of-Rack Media Connections



**T1700-LED**  
17-inch LED-backlit LCD,  
16:9 screen aspect ratio,  
resolution support up to  
1920x1080 @60 Hz.



**T1900-LED**  
19-inch LED-backlit LCD,  
4:3 screen aspect ratio,  
resolution support up to  
1280x1024 @75 Hz.

# Simply the best in KVM-over-IP



## Mouse in Sync

All Raritan products come with the unique Absolute Mouse Synchronization. It provides perfect mouse synchronization without changing server mouse setting.



## Military Grade Security

With Raritan's KVM solutions, you can meet government and military security mandates, including: AES & FIPS 140-2 encryption, Common Access Card (CAC) authentication, and IPv6 networking.



## Broad Compatibility

A suite of multiplatform CIMs to connect to VGA, DVI, HDMI and DisplayPort, USB, USB with virtual media, Sun®, Sun USB and serially controlled servers, as well as popular blade server models from: HP®, IBM®, Dell® and Cisco®.



## Amazing Digital Video

Our products support high definition video over-IP. 1920x1200, high definition, digital video performance supports broadcast and other dynamic, video-intensive applications. Our KX III even has a DVI digital local port which provides fast, at-the-rack performance.



## Virtual Media over IP

Our Dominion products come equipped with virtual media to enable remote tasks, such as software installation, remote booting and diagnostics, using the widest variety of CD, DVD, USB, internal and remote drives and images



## ....and much more....

Our KVM technology is second to none and you will find that our products evolve continuously. Providing you with tomorrow's technology, today.



## "Technology Born Out of Passion"

Rasul Damji  
VP, Global Sales & Product Operations



## Publisher DER SPIEGEL: Significant Productivity Increase and Enhancement of Service Level Agreements

DER SPIEGEL chose Raritan's Paragon KVM switch, a modular, Cat5-based remote access solution allowing for a permanent and unblocked access to attached servers. Multiple users can simultaneously access rack-mounted servers. Our solution for DER SPIEGEL now includes 6 Paragon Switches, each controlling 42 servers. So, future expansions are also possible.

Paragon is based on an innovative, modular, and stackable architecture and offers the highest port density currently available while saving space and HVAC costs.

DER SPIEGEL's IT team can therefore quickly address occurring IT issues that could impact SLAs. That way, expensive and time consuming trips to affected servers can be eliminated while ensuring more productivity.



**“With remote data center access on BIOS level we could considerably increase our response times and productivity”**

Read full case-study on [Raritan.eu](http://Raritan.eu)

### Customer

DER SPIEGEL is one of the most influential news magazines in Europe. It is based in Hamburg and has a weekly print run of over one million with 6.5 million readers.

### Challenges

Secure and location-independent access to all data center servers. A more flexible server administration with longer operation times while maintaining the same staff base. Integration of a heterogeneous IT environment including Windows, Linux and Unix (Sun, HP).

### Solutions

Paragon KVM (42-Port model) with remote access over IP Reach.

### Results

Adoption of and compliance with Service Level Agreements (SLAs) resulting in increased productivity, reduced mean time to repair (MTTR) and no nighttime trips to the data center in case of downtimes.





Raritan provides secure IT infrastructure management solutions that increase data center efficiency and productivity by delivering integrated in-band and out-of-band server access, control and power management. Raritan's KVM, serial console and intelligent PDU products are in use at over 50,000 locations worldwide. Raritan's OEM division provides embedded hardware and firmware for server and client management, including KVM over IP, intelligent power management and other industry standards-based management applications.



### Endorser of the EU Code of Conduct on Data Centre Energy Efficiency

Formulated by the EU's Joint Research Centre, the Code is a measured response to the energy challenges the EU faces. Its aim is to encourage companies with data centers to reduce energy consumption while ensuring business objectives continue to be met.

As an endorser, Raritan have pledged to implement the Code's ethos through devising products and services that help organizations to bring their data centers into line with its best practice recommendations.

**Raritan Benelux** (European HQ)  
Jan van Galenstraat 59  
31115 JG Schiedam  
The Netherlands

Phone: +31 (0)10 284 4040  
Email: [marketing.europe@raritan.com](mailto:marketing.europe@raritan.com)

**Raritan France**  
120, Rue Jean Jaurès  
92300 Levallois-Perret  
France

Phone: +33 (0)1 4756 2039  
Email: [sales.france@raritan.com](mailto:sales.france@raritan.com)

**Raritan Germany**  
Kaistraße 18  
40221 Düsseldorf  
Germany

Phone: +49 (0)375 / 271 349 47-99  
Email: [sales.germany@raritan.com](mailto:sales.germany@raritan.com)

**Raritan UK**  
4th Floor, 25-26 Lime Street  
London, EC3M 7HR  
United Kingdom

Phone: +44 (0)20 7090 1390  
Email: [sales.uk@raritan.com](mailto:sales.uk@raritan.com)